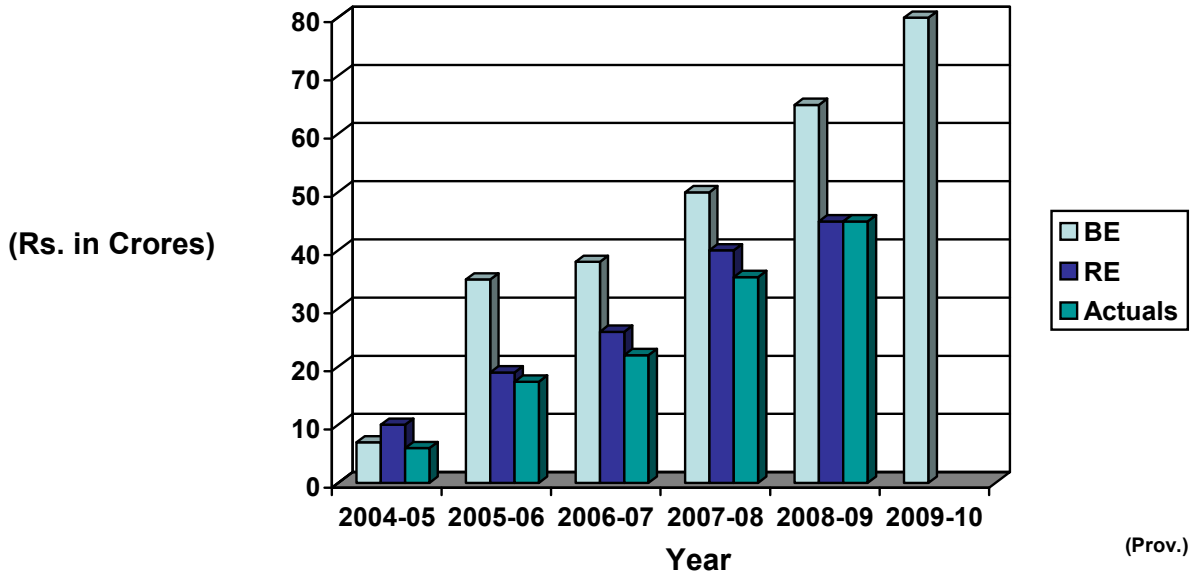


FIGURE-A

Estimates and Expenditure



(Rs. in Crores)

	2004-05	2005-06	2006-07	2007-08	2008-09	2009-10
BE	7	35	38	50	65	80
RE	10	19	26	40	45	
Actual	6	17.4	22	35.4	45 (provisional)	

FIGURE-B

Administrative Expenditure* vis-à-vis Scheme Expenditure in the Year (2009-10 – Estimate)

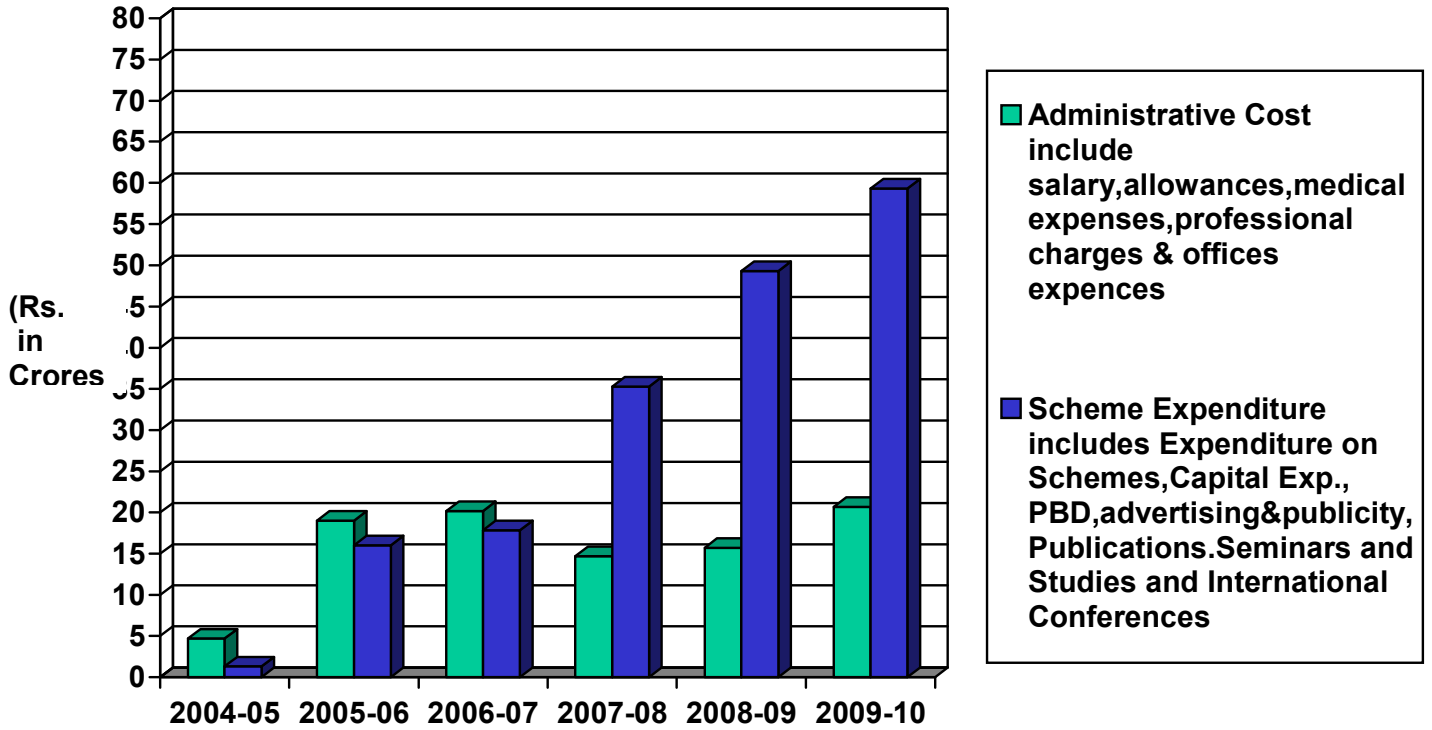


FIGURE-C

Reduction in Net Budget Outflow* on PBD

