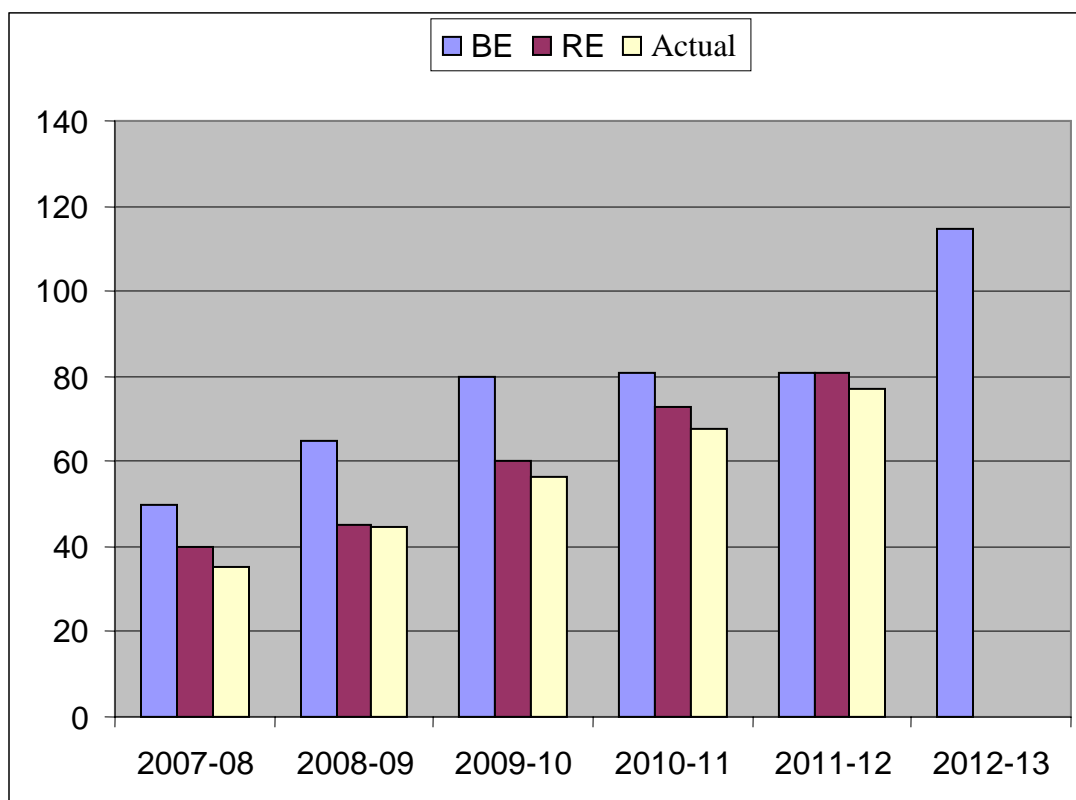


# Estimates and Expenditure

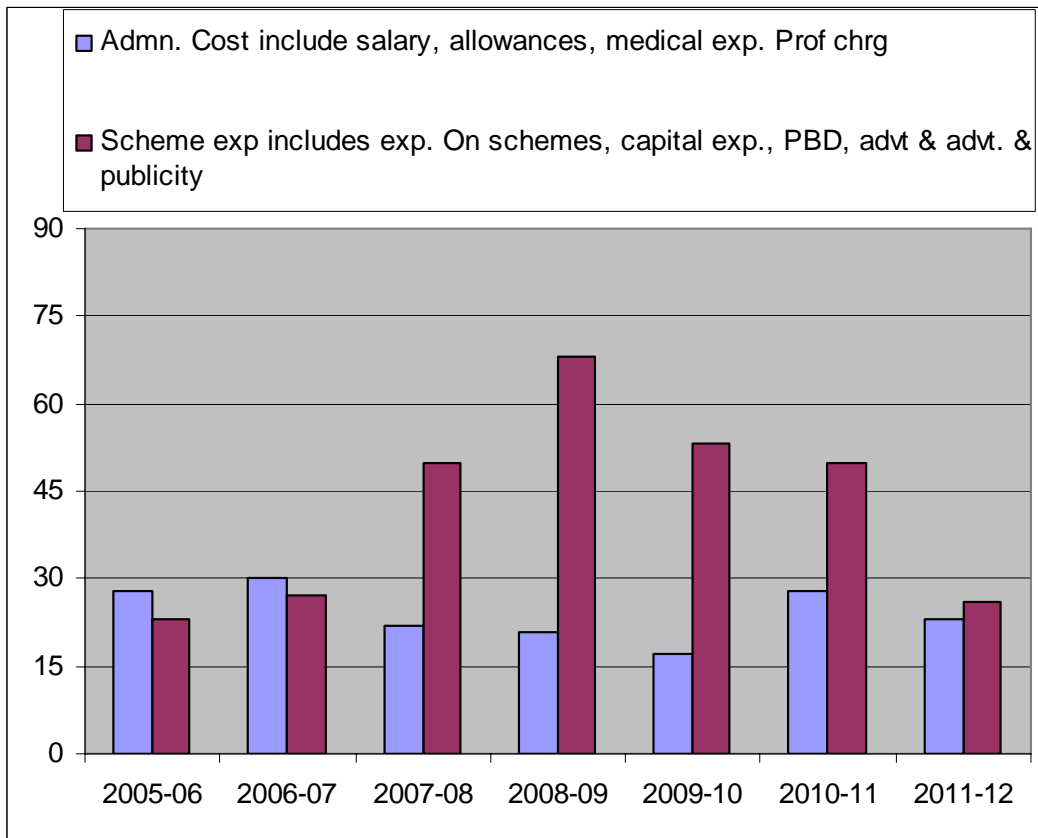
**■** Administrative Cost includes salary, allowances, medical expenses, professional charges & office expenses.

**■** Scheme Expenditure includes Expenditure on Schemes, Capital Exp., PBD, advertising & publicity, Publications. Seminars and Studies and International Conferences.



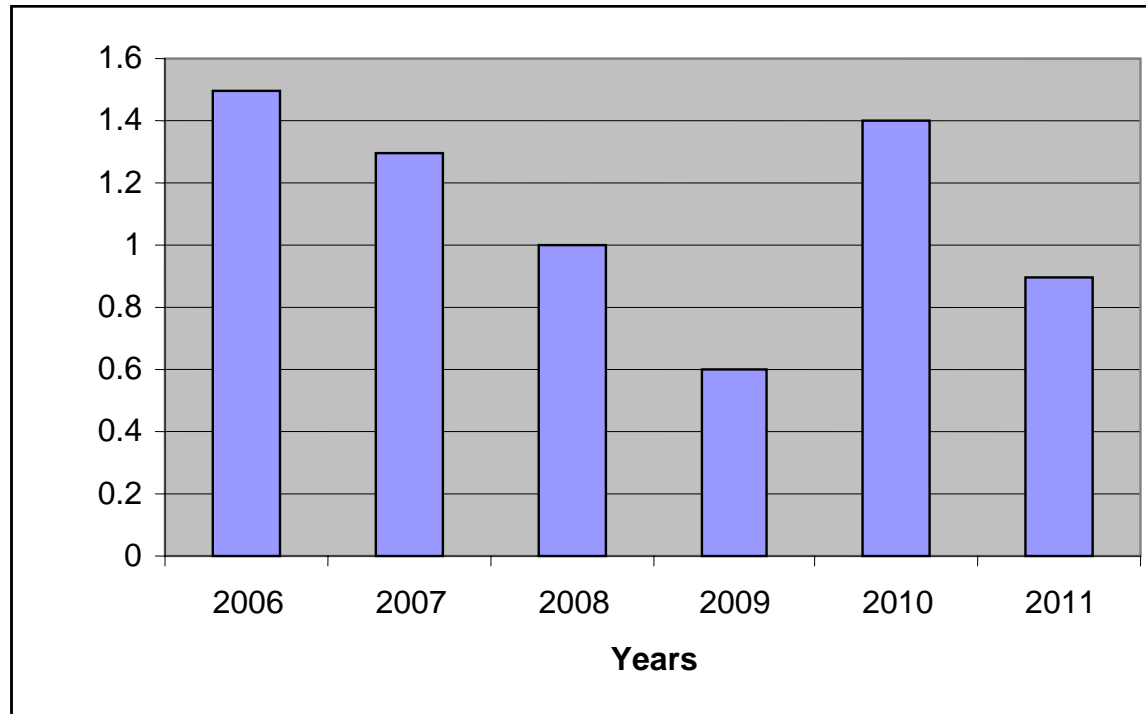
	(. In Crores)					
	YEAR					(Prov)
	2007-08	2008-09	2009-10	2010-11	2011-12	2012-13
<b>BE</b>	50	65	80	81	81	114.77
<b>RE</b>	40	45	60	73	81	
<b>Actual</b>	35.4	44.55	56.23	67.87	77.13	

**FIGURE-B**  
**ADMINISTRATIVE EXPENDITURE**  
**(UP TO JANUARY 2012) VIS-À-VIS SCHEME**  
**EXPENDITURE IN THE YEAR 2011-12-**  
**ESTIMATES**



**Figure C**

**Reduction in net budget outflow\* on  
PBD ( ` . In Crore)**



Outflow\* = Actual PBD Expenditure less Revenue generated

Source: Finance & Budget Division, MOIA